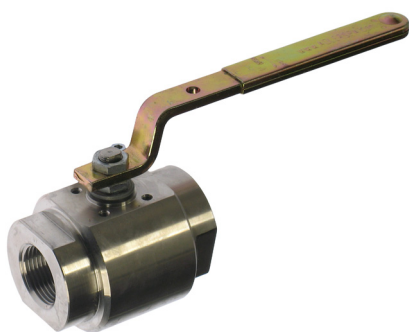


2-WAY BALL VALVE FOR HIGH PRESSURE APPLICATIONS, MANUALLY OPERATED

**Description:**

- 2-way high pressure ball valve
- full passageway
- female thread acc. to EN 10226
- chambered seat sealing from 3-sides
- length of body acc. to DIN3202-M3
- antistatic device
- sealing for spindle with 2-piece chevron packing
- double body sealing
- blow out safe, spindle mounted from inside
- top flange acc. to EN ISO 5211
- steel hand lever
- any installation position

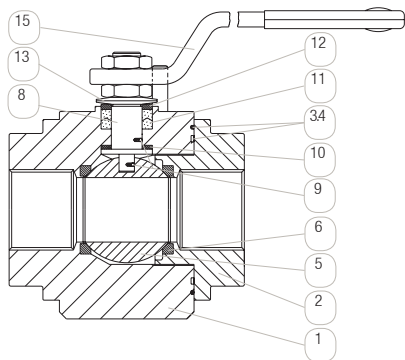
Range of application:

- standardized length of body permits easy replacement in existing applications
- pneumatic or electric automatable
- top flange for direct actuator mounting
- working pressure PN160
(see pressure-temperature-diagram)
- temperature range: -20°C up to +200°C
(see pressure temperature diagram)

Comments:

Automation on request with an assembly kit.

Threads according to EN 10226: It describes the threaded connection of a conical male thread (R) with a parallel female thread (Rp).

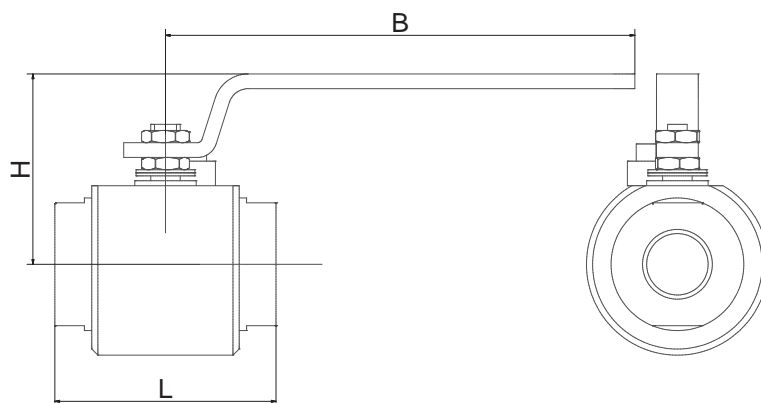


pos.	part	standard material		optional material	
1	body	1.4401	0	1.0402 zinc plated	J
2	connector	1.4401		1.0402 zinc plated	
3	primary sealing	PTFE		-	
4	secondary sealing	FKM		-	
5	ball	1.4401	0	1.4301	0
6	seat sealing	PTFE with metal core	U	-	
8	spindle	1.4401		-	
9	antistatic device	1.4401		-	
10	friction ring	PTFE		-	
11	chevron packing	PTFE / graphite	R	-	
12	thrust ring	1.4404		-	
13	disc spring	50CrV4 galvanised zinc-plated		-	
15	hand lever	St 37 galvanised zinc-plated		St 37 coated	

Options:

- SV: spindle extension
- TD: minimal clearance volume with half shells made of PTFE
- SP: gland extension
- FS: fire-safe design
- AE: all external parts made of stainless steel
- ZG: certificate
- OF: free of oil and grease

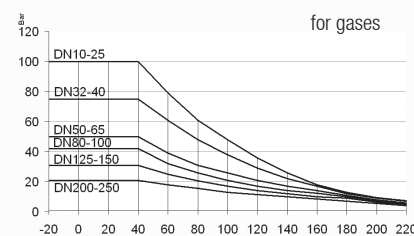
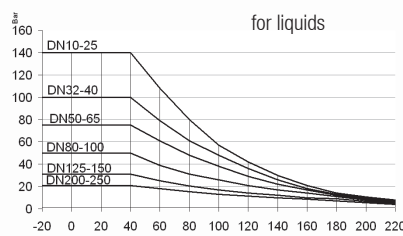
An overview of the entire material of a key product group, see the catalog at the beginning of each chapter.



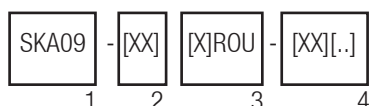
match code	size [inch]	nominal pressure	nominal size [mm]	L [mm]	H [mm]	CV [m ³ /h]	weight [kg]
SKA09-02xROU	1/4	PN160	10	50	46	5.9	0.6
SKA09-03xROU	3/8	PN160	10	60	46	9.4	0.65
SKA09-04xROU	1/2	PN160	15	75	63	19.4	1.2
SKA09-05xROU	3/4	PN160	19	80	65	45.6	1.4
SKA09-06xROU	1	PN160	25	90	76	71.5	2.2
SKA09-07xROU	1 1/4	PN160	30	110	80	105	3.2
SKA09-08xROU	1 1/2	PN160	38	120	98	170	5.2
SKA09-09xROU	2	PN160	51	140	108	275	7.8

CV value: The nominal flow rate CVs acc. to VDI/VDE 2173 shows the water quantity in cubic meter per hour with the valve fully opened, $\Delta p=1$ and the water temperature between 5°C and 30°C.

Pressure temperature diagram



The pressure temperature diagram refers to the ball valve of this type. For the actuated units the actuator limits the permissible pressure range to the operating pressure as indicated above, as long as this is lower than the pressure range of the ball valve. If your application has strong temperature variations, you may need additional options like a relief well, to meet the figures. Please tell us your temperature variations with your order.



Order information:

1: type

- SKA09

2: connection size: 04-09 (see table)

3: materials:

- 1. digit: body material
- 2. digit: sealing for spindle
- 3. digit: ball material
- 4. digit: seat sealing

4: options (see "options")

Please ask for field specifications that are not listed in this data sheet.

Before installation please consider the installation and maintenance manual, especially the safety indications!