

## BALL VALVE WITH FLANGES FOR GAS APPLICATIONS, AUTOMATABLE (GAS)



## Description:

- full passageway
- flange acc. to EN1092-1
- face-to-face length acc. to EN558, series 1 (up to DN25)
- face-to-face length acc. to EN558, series 27 (from DN32)
- blow out safe, spindle mounted from inside
- component labelling acc. to TÜV
- DVGW certification for gas
- TA-Luft
- cast iron hand lever
- any installation position

## Range of application:

- standard length enables easy replacement in existing plants
- suitable for gas applications
- working pressure PN40
- temperature range: -20°C up to +160°C
- range of application DVGW: -20°C up to +90°C

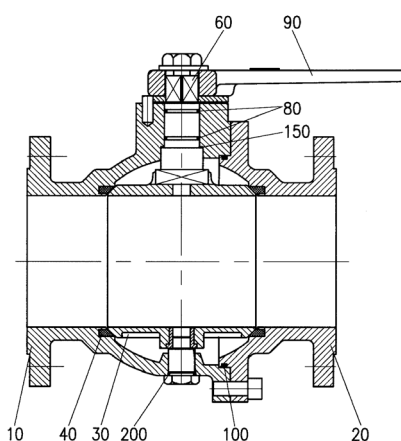
## Comments:

**Blow out protection: Better protection against unintended disengagement of the spindle and the sealing by a blow out protection.** No accidental damage possible from outside.

Alternative flange drilling patterns acc. to PN10, PN25, PN40 are available.

alternative face-to-face length:

- DN32-DN250 also available in face-to-face length EN558, series 1.
- DN15-DN25 also available in face-to-face length EN558, series 27.

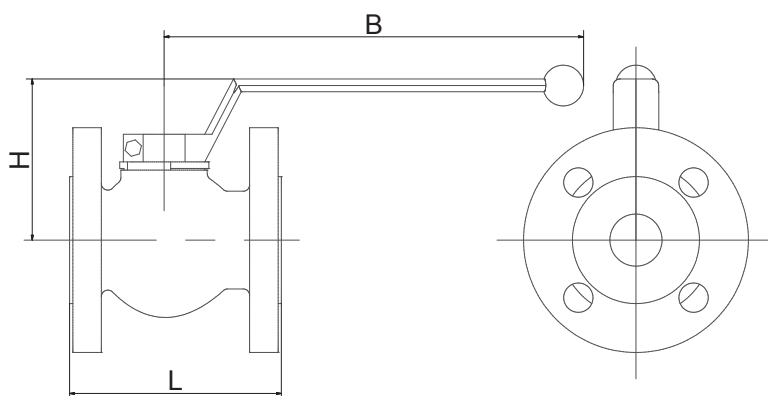


pos.	part	steel		cast steel		stainless steel	options		
10	body	C22.8 (DN15-DN25)	J	GSC25	K	1.4571 (DN15-DN50)	0		
		GGG40 (DN32-DN250)	M			1.4408 (DN65-DN250)	0		
20	flange	1.0570		GSC25		1.4404			
30	ball	brass chromium-plated (DN10-DN25)	F	brass chromium-plated (DN10-DN25)	F	1.4404 (DN10-DN50)	0		
		steel hard chromium-plated (DN32-DN250)	J	steel hard chromium-plated (DN32-DN250)	J	1.4408 (DN65-DN250)	0		
40	seat sealing	PTFE	T	PTFE	T	PTFE	T		
60	spindle	brass chromium-plated (DN10-DN25)		brass chromium-plated (DN10-DN25)		1.4404			
		steel hard chromium-plated (DN32-DN250)		steel hard chromium-plated (DN32-DN250)					
80	o-ring	FKM	V	FKM	V	FKM	V	NBR	B
90	hand lever	Z410		Z410		Z410			
		alloy		alloy		alloy			
100	o-ring	GTW		GTW		GTW			
		FKM		FKM		FKM		NBR	
150	slide ring	PTFE		PTFE		PTFE			
200	o-ring	FKM		FKM		FKM		NBR	

For details about the order code see "Order information". An overview of the complete material code you can find at the beginning of each product section of the product catalogue.

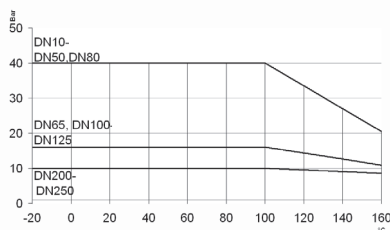
## options:

- ZG: certificate
- OF: free of oil and grease
- ISO: kit for a mounting flange



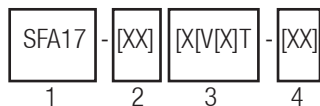
match code	size	nominal pressure	nominal size [mm]	L [mm]	H [mm]	B [mm]	CV value** [m <sup>3</sup> /h]	weight [kg]
SFA17-51-xVxT	DN10	PN40	10	130	67	130	16.3	1.9
SFA17-52-xVxT	DN15	PN40	15	130	69	130	36.7	2.4
SFA17-53-xVxT	DN20	PN40	20	150	71	130	65.3	3.3
SFA17-54-xVxT	DN25	PN40	25	160	82	160	102	4.4
SFA17-55-xVxT	DN32	PN40	32	130	117	250	167	8
SFA17-56-xVxT	DN40	PN40	40	140	121	250	261	9
SFA17-57-xVxT	DN50	PN40	50	150	128	250	408	13
SFA17-58-xVxT	DN65	PN16	65	170	158	250	512	20.5
SFA17-59-xVxT	DN80	PN40	80	180	181	368	1045	29.5
SFA17-60-xVxT	DN100	PN16	100	190	194	350	1633	36
SFA17-61-xVxT	DN125	PN16	125	312	195	500	2552	50
SFA17-62-xVxT	DN150	PN16	150	350	225	700	3674	72
SFA17-63-xVxT	DN200	PN10	200	400	260	700	6532	108

\*\*CV value: The nominal flow rate CVs acc. to VDI/VDE 2173 shows the water quantity in cubic meter per hour with the valve fully opened,  $\Delta p=1$  and the water temperature between 5°C and 30°C.



### Pressure temperature diagram

The pressure temperature diagram refers to the ball valve of this type. If your application has strong temperature variations, you may need additional options like a relief well, to meet the figures. Please tell us your temperature variations with your order.



### Order information:

**1: type:** SFA17

**2: connection size:** 52-63 (see table)

**3: materials:**

- 1. digit: body material  
J = steel  
M = cast iron with spheroidal graphite  
K = cast steel  
O = stainless steel
- 2. digit: sealing for spindle  
B = NBR  
V = FKM

- 3. digit: ball material  
F = brass chromium-plated  
L = grey cast iron  
O = stainless steel
- 4. digit: seat sealing  
T = PTFE

**4: options (see "options")**

Please ask for field specifications that are not listed in this data sheet.

Before installation please consider the installation and maintenance manual, especially the safety indications!