**Description:**

- full passageway
- face-to-face length acc. to EN3202, series 27 (short face-to-face length)
- face-to-face length acc. to EN3202, series 1 (long face-to-face length)
- 2-pcs. body construction
- mounting flange acc. to ISO5211 for direct mounting
- flange acc. to EN1092-1 / PN40 and PN16
- stainless steel hand lever
- antistatic device
- blow out safe, spindle mounted from inside
- any installation position

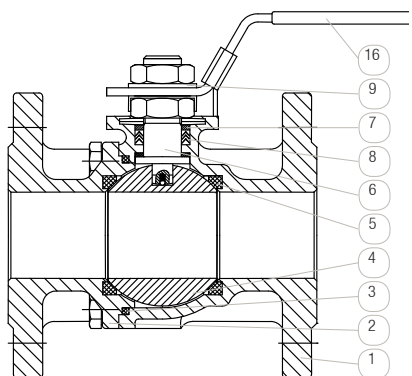
Range of application:

- standard length enables easy replacement in existing plants
- working pressure PN16 - PN40 (see pressure-temperature-diagram)
- temperature range: -20°C up to +200°C (see pressure temperature diagram)
- pneumatic or electric automatable

Comments:

Blow out protection: Better protection against unintended disengagement of the spindle and the sealing by a blow out protection. No accidental damage possible from outside.

On request the ball valve is pneumatically or electrically automatable.

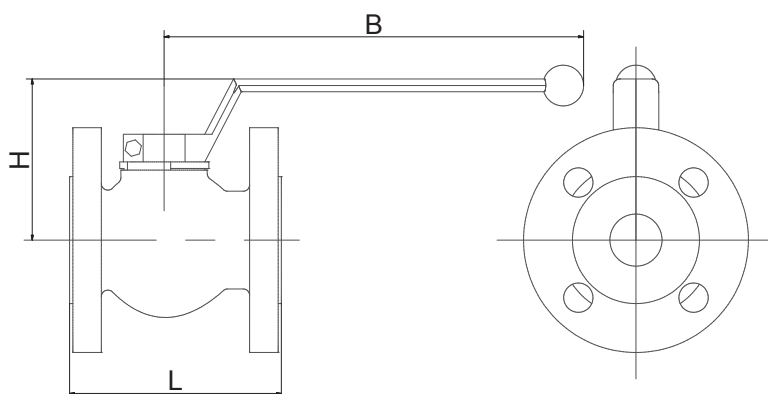


pos.	part	material (standard)		options
1	body	1.4408	0	-
2	connector	1.4408		-
3	body sealing	PTFE	T	-
4	ball	1.4401		-
5	seat sealing	PTFE	T	-
6	spindle	1.4401	0	-
7	thrust ring	PTFE		-
8	packing for spindle	PTFE		-
9	gland	1.4301		-
16	handle	1.4301 + plastics		-

For details about the order code see "Order information". An overview of the complete material code you can find at the beginning of each product section of the product catalogue.

options:

- ZG: certificate
- OF: free of oil and grease

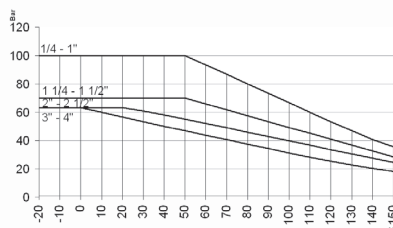


match code	size	nominal pressure		nominal size [mm]	L [mm]		H [mm]	B [mm]	Cv-Wert** [m ³ /h]
		NFA 17	NFB17		NFA17	NFB17			
NFx17-52-30TOT	DN15	PN40	PN40	15	115	130	72	145	19,4
NFx17-53-30TOT	DN20	PN40	PN40	20	120	150	74	145	45,6
NFx17-54-30TOT	DN25	PN40	PN40	25	125	160	81	178	71,5
NFx17-55-30TOT	DN32	PN40	PN40	32	130	180	87	178	105
NFx17-56-30TOT	DN40	PN40	PN40	38	140	200	126	255	170
NFx17-57-30TOT	DN50	PN40	PN40	50	150	130	136	255	275
NFx17-58-10TOT	DN65	PN16	PN40	64	170	290	155	255	507
NFx17-59-10TOT	DN80	PN16	PN40	76	180	310	167	350	905
NFx17-60-10TOT	DN100	PN16	PN40	96	190	350	179	400	1414

**CV value: The nominal flow rate CVs acc. to VDI/VDE 2173 shows the water quantity in cubic meter per hour with the valve fully opened, $\Delta p=1$ and the water temperature between 5°C and 30°C.

Pressure temperature diagram

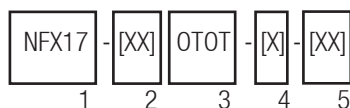
The pressure temperature diagram shows the max. permitted working pressure in relation of the media temperature.



The pressure temperature diagram refers to the ball valve of this type. For the actuated units the actuator limits the permissible pressure range to the operating pressure as indicated above, as long as this is lower than the pressure range of the ball valve.

If your application has strong temperature variations, you may need additional options like a relief well, to meet the figures.

Please tell us your temperature variations with your order.



Order information:

1: type: NFA17, NFB17

3: connection size: 52-60 (see table)

4: materials:

- 1. digit: body material
0 = stainless steel
- 2. digit: sealing for spindle
T = PTFE
- 3. digit: ball material
0 = stainless steel
- 4. digit: seat sealing
T = PTFE

5: options (see "options")

Please ask for field specifications that are not listed in this data sheet.

Before installation please consider the installation and maintenance manual, especially the safety indications!