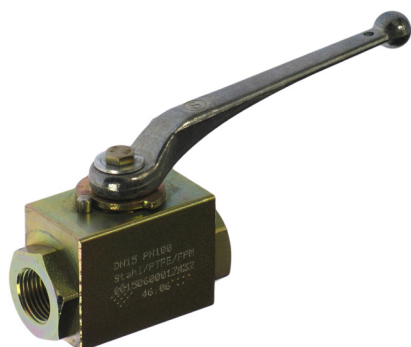


## BLOCK BALL VALVE, FOR HIGH PRESSURE APPLICATIONS



## Description:

- block design with screwed connections
- full passageway, starting from 1 1/4" reduced passageway
- female thread acc. to ISO 228
- length of body acc. to DIN 3202
- blow out safe, spindle mounted from outside
- cast iron hand lever
- any installation position
- DVGW certificate for gas - 1/8"-1" up to PN16

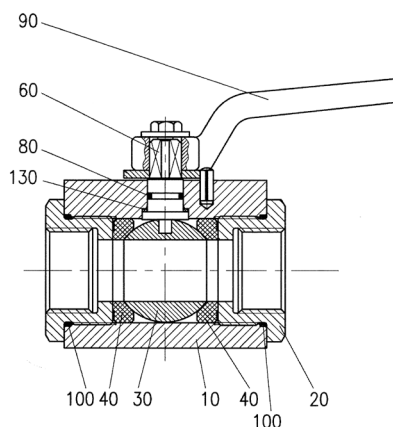
## Range of application:

- standardized length allows for easy replacement in existing applications
- working pressure PN63 - PN500
- temperature range:  
steel design: -10°C up to +90°C  
stainless steel design: -20°C up to +160°C

## Comments:

Optionally a mounting kit for actuation (pneumatic or electric) is available. Please specify with your order.

**Threads according to EN 228:** It describes the threaded connection of a parallel male thread with a parallel female thread and is marked with "G".



pos.	part	standard design		high pressure design					
		steel	stainless steel	steel	stainless steel	steel	stainless steel	steel	
10	body	1.0715	J	1.4571 (O)	O	1.0715 (J)	J	1.4571 (O)	O
20	connector	1.0715		1.4571 (O)		1.0715 (J)		1.4571 (O)	
30	ball	brass chromium-plated	F	1.4404 (O)	O	1.0715 (J)	J	1.4404 (O)	O
40	seat sealing	PTFE	T	PTFE	T	POM*	N	POM*	N
						PEEK*	Z	PEEK*	Z
60	spindle	brass chromium-plated		1.4404		1.0715		1.4404	
80	o-ring	NBR	B	FKM	V	NBR	B	FKM	V
90	hand lever	Z410		Z410		Z410		Z410	
100	o-ring	NBR		FKM		NBR		FKM	
130	slide ring	NBR		PTFE		NBR		FKM	

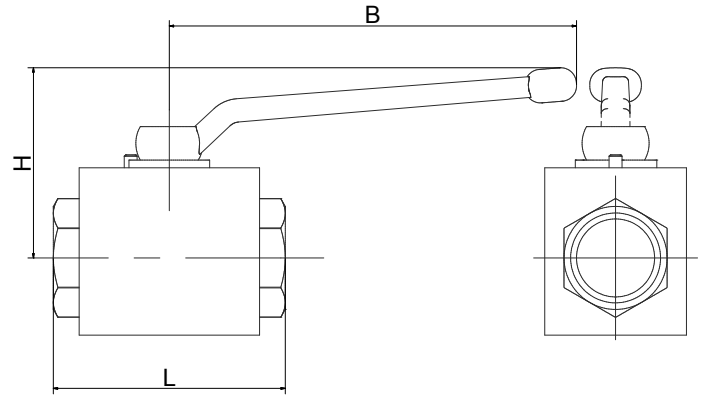
note deviating medium temperature:

- max. 90°C with seat sealing POM (N),
- max. 150°C with seat sealing made of PEEK (Z) and o-rings / slide rings made of FKM (V).

For details about the order code see "Order information". An overview of the complete material code you can find at the beginning of each product section of the product catalogue.

## options:

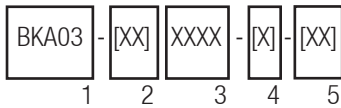
- ZG: certificate
- OF: free of oil and grease
- ISO: kit for a mounting flange
- NPT: threads acc. to ANSI
- HD: high pressure application



match code	size	nominal pressure		nominal size [mm]	L [mm]	H [mm]	B [mm]	CV value** [m3/h]	weight [kg]
		standard	HD design						
BKA03-01-xxxx	1/8	0-100	0-500	4	50	48,5	76	2.6	0.3
BKA03-02-xxxx	1/4	0-100	0-500	6	60	48,5	76	5.9	0.3
BKA03-03-xxxx	3/8	0-100	0-500	10	60	77	112	16.3	0.5
BKA03-04-xxxx	1/2	0-100	0-500	15	75	69	130	36.7	1
BKA03-05-xxxx	3/4	0-63	0-315	20	80	70	130	65.3	1.2
BKA03-06-xxxx	1	0-63	0-315	25	90	72	160	102	2.1
BKA03-07-xxxx	1 1/4	0-63	0-315	24*	136*	72	160	102	2.3
BKA03-08-xxxx	1 1/2	0-63	0-315	24*	138*	72	160	102	2.5

\*deviating from the length of body acc. to DIN and a reduced nominal size!

\*\*CV value: The nominal flow rate CVs acc. to VDI/VDE 2173 shows the water quantity in cubic meter per hour with the valve fully opened, Δp=1 and the water temperature between 5°C and 30°C.



**Order information:**

**1: type: BKA03**

**3: connection size: 52-64 (see table)**

**4: materials:**

- 1. digit: body material  
J = steel  
O = stainless steel
- 2. digit: sealing for spindle  
B = NBR  
V = FKM

- 3. digit: ball material  
F = brass chromium-plated  
J = steel  
O = stainless steel
- 4. digit: seat sealing  
T = PTFE  
N = POM  
Z = PEEK

**5: options (see "options")**

Please ask for field specifications that are not listed in this data sheet.

Before installation please consider the installation and maintenance manual, especially the safety indications!