**Description:**

- 2/2-way pressure operated seat valve
- seat valve with plunger washer
- direct force operated
- body in gray iron, cast steel or stainless steel
- flange connection EN1092-1 PN16 respectively PN40
- installation position only with standing magnet
- DN32 upto DN100 serial-productional with adjustable close muting

Application area:

- viscosity 50mm²/s
- medium temperature -40°C to +200°C (PTFE)
- ambient temperature -10°C to +60°C
- operating pressure upto 40bar (cast steel/stainless steel) respectively 16bar (gray iron). See chart.
- control pressure 4 upto 10 bar
- for hot and cold water, oil and air, in stainless steel design also for aggressive media
- control medium air and neutral liquids

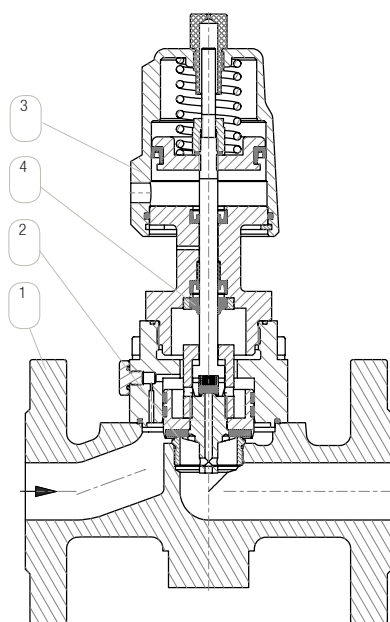
Explanation:

During the installation please pay attention to the **flow pattern** (marking with arrow on the body). Optional flow pattern with optional available double-acting piston drive. Other sealings, operating pressures and control cylinder bodies on request. Valves of this line have to be used closing with the medium.

With aluminium cylinders (Type „xxZ“) there must not be used water as control medium.

The adjustable close muting can be optional ordered for other nominal sizes (Option RS).

Flanges also according to ANSI and in other pressure stages available.



Wear parts can vary depending on the valve design.

Service set: valve plate, spindle, seal kit, spring

Sealing set: contains all seals

You find information about the appointment code under „Appointment details“. An overview of the complete material code is in the catalog at the beginning of the chapter of the respective product group.

Pos.	Component	Gray iron		Cast steel		Stainless steel	Options	
1	Body	GG-25	L	GS-C25	K	1.4581 (upto DN50) 1.4408 (from DN65)	O	
2	Seat sealing	PTFE	T	PTFE	T	PTFE	T	EPDM FKM
3	Cylinder	Ø50: Brass Ø80/125: Aluminium	A Z	Ø50: Brass Ø80/125: Aluminium	A Z	Ø50: Brass Ø80/125: Aluminium	A Z	Stainless steel O
4	Spindle sealing	PTFE	T	PTFE	T	PTFE	T	EPDM FKM

Differing medium temperature for optional sealings:

- EPDM and FKM -10°C upto +80°C

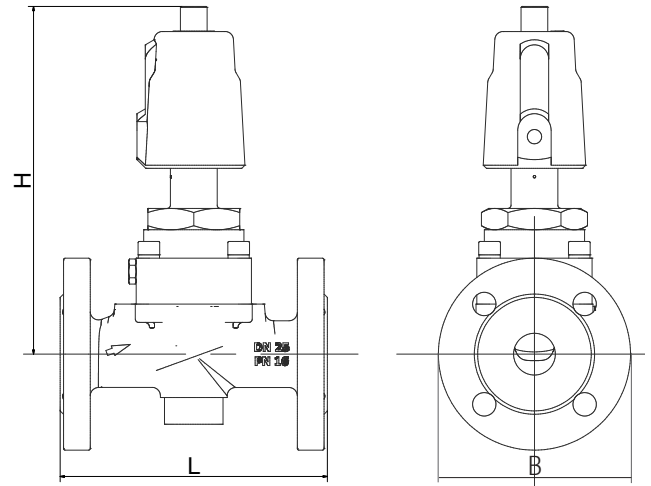
Wear parts:

- Valve plate
- Seat sealing
- Retaining disc
- Main valve spindle
- Pilot spindle
- Pilot sealing
- Union nut
- disc
- U-ring
- O-ring
- Spring
- V-Packing
- Ring
- Piston ring

Options:

- PV: Pilot valve GMV3197 / GMV3164
- OF: Free of oil and grease
- DW: Actuator double-acting
- PS: Optional position indication (NO and double-acting)
- PS: Electrical position indication (limit switch)
- PS: 2 inductive limit switch in the transparent box
- HA: Manual override
- VU: Vacuum design with soft sealing
- VU: Vacuum design, also for pressure
- RS: Adjustable close muting

2/2-WAY PRESSURE OPERATED VALVE, FORCE OPERATED, FLANGE DESIGN



* declared is the maximal pressure range at a control pressure of 6bar

**KV-Value: The nominal flow of KV to VDI/VDE 2173 indicates the water amount in cubic metres per hour, at 100% opened armature, $\Delta p=1$ bar and at a water temperature from 5 to 30°C.

Matchcode	Size			Operating pressure*				Measures [mm]			Weight [kg]	Kv-Value** [m³/h]
				closing with medium								
	Conne- ction [inch]	Nominal size [mm]	Control cylinder [mm]	NC		NO		L	H	B		
				Type	Pres- sure [bar]	Type	Pres- sure [bar]					
Body gray iron (PN16)												
FDV2600-52-1Lxx150-xxx	DN15	15	50	12A	0-16	22A	0-16	130	250	95	5	6,8
FDV2600-53-1Lxx200-xxx	DN20	20	50	12A	0-16	22A	0-16	150	260	105	5,5	8,8
FDV2600-54-1Lxx250-xxx	DN25	25	50	12A	0-16	22A	0-16	160	260	115	6	11,5
FDV2600-55-1Lxx320-xxx	DN32	32	50	12A	0-16	22A	0-16	180	275	140	11	18
FDV2600-56-1Lxx400-xxx	DN40	40	50	12A	0-16	22A	0-16	200	275	150	12	26
FDV2600-57-1Lxx500-xxx	DN50	50	50	12A	0-16	22A	0-16	230	290	165	14	38
FDV2600-58-1Lxx650-xxx	DN65	65	50	12A	0-16	22A	0-16	290	310	185	35	62
FDV2600-59-1Lxx800-xxx	DN80	80	50	12A	0-16	22A	0-16	310	330	200	44	89
FDV2600-60-1Lxx1000-xxx	DN100	100	80	14Z	0-16	24Z	0-16	350	350	220	61	125
FDV2600-61-1Lxx1250-xxx	DN125	125	80	14Z	0-16	24Z	0-16	400	400	250	80	265
FDV2600-62-1Lxx1500-xxx	DN150	150	80	14Z	0-16	24Z	0-16	480	430	285	95	377
FDV2600-63-1Lxx2000-xxx	DN200	200	80	14Z	0-16	24Z	0-16	600	500	340	150	667
Body cast steel / stainless steel (PN16/PN40)												
FDV2600-52-3xxx150-xxx	DN15	15	50	12A	0-40	22A	0-40	130	275	95	6	6,8
FDV2600-53-3xxx200-xxx	DN20	20	50	12A	0-40	22A	0-40	150	290	105	6,5	8,8
FDV2600-54-3xxx250-xxx	DN25	25	50	12A	0-40	22A	0-40	160	290	115	7	11,5
FDV2600-55-1xxx320-xxx	DN32	32	50	12A	0-16	22A	0-16	180	300	140	12	18
FDV2600-55-3xxx320-xxx	DN32	32	80	14Z	0-40	24Z	0-40	180	300	140	12	18
FDV2600-56-1xxx400-xxx	DN40	40	50	12A	0-16	22A	0-16	200	300	150	13	26
FDV2600-56-3xxx400-xxx	DN40	40	80	14Z	0-40	24Z	0-40	200	300	150	13	26
FDV2600-57-1xxx500-xxx	DN50	50	50	12A	0-16	22A	0-16	230	320	165	15	38
FDV2600-57-3xxx500-xxx	DN50	50	80	14Z	0-40	24Z	0-40	230	320	165	15	38
FDV2600-58-1xxx650-xxx	DN65	65	50	12A	0-16	22A	0-16	290	350	185	37	62
FDV2600-58-3xxx650-xxx	DN65	65	80	14Z	0-40	24Z	0-40	290	350	185	37	62
FDV2600-59-1xxx800-xxx	DN80	80	50	12A	0-16	22A	0-16	310	370	200	46	89
FDV2600-59-3xxx800-xxx	DN80	80	80	14Z	0-40	24Z	0-40	310	370	200	46	89
FDV2600-60-3xxx1000-xxx	DN100	100	80	14Z	0-40	24Z	0-40	350	390	235	61	125
FDV2600-61-3xxx1250-xxx	DN125	125	80	14Z	0-40	24Z	0-40	400	420	270	80	265
FDV2600-62-1xxx1500-xxx	DN150	150	80	14Z	0-16	24Z	0-16	480	550	300	100	377
FDV2600-62-3xxx1500-xxx	DN150	150	125	15Z	0-40	25Z	0-40	480	550	300	100	377
FDV2600-63-1xxx2000-xxx	DN200	200	80	14Z	0-16	24Z	0-16	600	580	375	155	667
FDV2600-63-3xxx2000-xxx	DN200	200	125	15Z	0-40	25Z	0-40	600	580	375	155	667

Functions:**closed in rest position (NC):**

Type1xx: closing with the medium, single-acting. With liquids there can occur closing and opening strokes.

Type3xx: closing against the medium, single-acting. With liquids prevention of closing and opening strokes.

opened in rest position (NO):

Type2xx: closing with the medium, single-acting

Type4xx: closing against the medium, single-acting

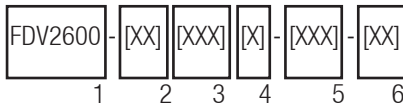
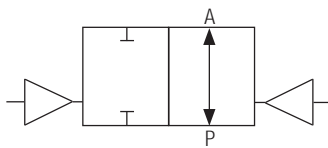
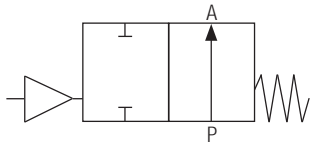
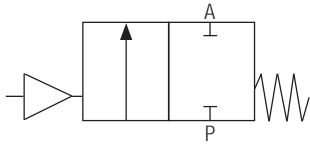
optional flow pattern:

Type5xx/Type6xx: for optional flow pattern

Optional available:

The GMV3197 as 3/2-way-pilot valve, direct force operated, for control of the compressed air cylinder. If necessary for big nominal sizes we advise the GMV3164 for faster closing times.

You find detailed information in the product group „Solenoid valve“.

**Appointment details:****1: Basistype: FDV2600****2: Connection size:**

- 52-63 (see chart)
- 82-90 (ANSI-Flanges)
- attached is the pressure stage:
 - 1: PN16
 - 3: PN40

3: Material:

- 1. Body material
 - L=Grey iron
 - K=Cast steel
 - O=Stainless steel
- 2. : Spindle sealings and
- 3. : Seat sealings
 - E=EPDM
 - T=PTFE
 - V=FKM

4. Nominal size in 1/10mm (s. chart)**5: Type of the pressure cylinder (other types on request):**

- 1. Information about the function
 - 1=closing with medium, NC, single-acting
 - 2=closing with medium, NO, single-acting
 - 3=closing against medium, NC, single-acting
- 2. Information about the cylinder diameter:
 - 2: Ø50
 - 4: Ø80
 - 5: Ø125
- 3. Material of the cylinder
 - A=Brass (blank)
 - O=Stainless steel
- Z=Aluminium

6: Options (see „Options“)

Demands on your application conditions that are not listed on the data sheet, can be requested!

The guide book and the maintenance guidelines, particularly the given safety instructions have to be paid attention to before the installation!