

3/2-WAY PRESSURE OPERATED VALVE, DIRECT FORCE OPERATED

**Description:**

- 3/2-way pressure operated seat valve
- seat valve with plunger washer
- direct force operated
- body in red brass, or stainless steel
- female thread ISO228
- optional installation position

Application area:

- viscosity 600mm²/s
- medium temperature -20°C to +200°C (PTFE/FKM)
- ambient temperature -10°C to +35°C
- operating pressure upto 40bar (see chart).
- control pressure 4 upto 10 bar
- for hot and cold water, oil and air, in stainless steel design also for aggressive media
- control medium air and neutral liquids

Explanation:

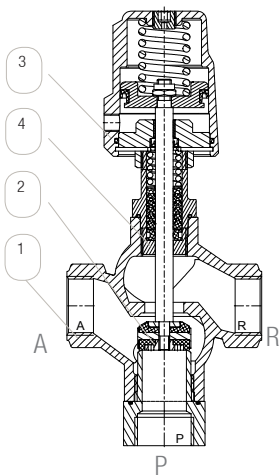
During the installation please pay attention to the **flow pattern** (marking with arrow on the body). Optional flow pattern with optional available double-acting piston drive. Other sealings, operating pressures and bodies of the control cylinder on request.

The sealing at the actuator is HNBR upto +200°C.

With aluminium cylinders (Type „xxZ“) water must not be used as control medium.

Thread ISO 228: the norm describes the thread connection of a parallel male thread with a parallel female thread and is marked with „G“.

Valves of this line are available with a **pressure cylinder in universal design (-UN)**. This affords an Dies ermöglicht Ihnen die Beaufschlagung mit Druck an beliebigen Eingängen.



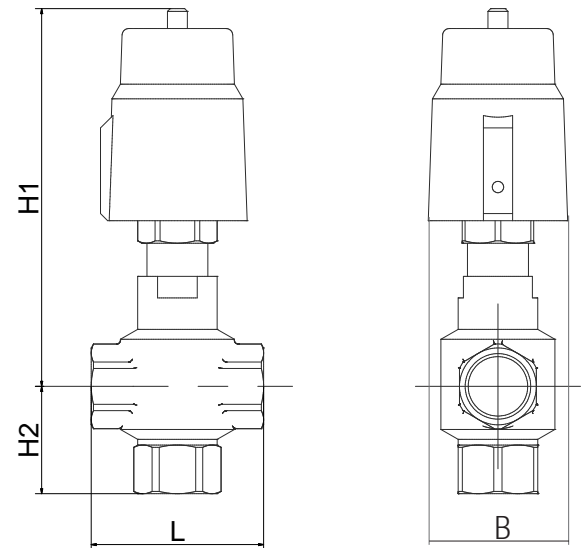
Pos.	Component	Brass		Stainless steel		Optional material	
1	Body	Red brass	B	Stainless steel	O		
	Seat sealing	PTFE-Bronze	R	PTFE	T		
	Cylinder	50: Brass	A	50: Brass	A	Stainless steel	0
	Spindle sealing	80/125: Aluminium	Z	80/125: Aluminium	Z		
		PTFE-Coal	U	PTFE	T		

Options:

- PV: Pilot valve GMV3197 / GMV3164
- OF: Free of oil and grease
- DW: Actuator double-acting
- PS: Optional position indication (NO and double-acting)
- PS: Electrical position indication (limit switch)
- HA: Manual override
- VU: Vacuum design with soft sealing
- UW: Male thread with screw connection
- AS: Welding ends
- MV: Milk pipe connection
- UN: Reciprocally flown through (mix/spread)

You find information about the appointment code under „Appointment details“. An overview of the complete material code is in the catalog at the beginning of the chapter of the respective product group.

3/2-WAY PRESSURE OPERATED VALVE, DIRECT FORCE OPERATED

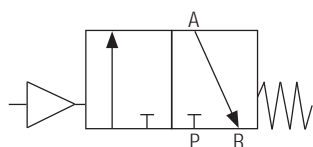


Matchcode	Size			Operating pressure*					Measures [mm]				Weight [kg]	Kv-Value**		
				closing with medium			UNIVERSAL							[m³/h]		
	Con- nection [inch]	No- minal size [mm]	Control cylin- der [mm]	NC		NO		Type	Pres- sure [bar]	L	H1	H2		B	Kv1	Kv2
				Type	Pres- sure [bar]	Type	Pres- sure [bar]									
Body red brass																
DSA7800-04BUR-180-xxx	1/2	18	50	12A	0-12	22A	12A-UN	0-8	100	210	73	62	1,6	3,8	5	
DSA7800-04BUR-180-xxx	1/2	18	80	14Z	0-16	24Z	14Z-UN	0-16	100	245	73	94	2,4	3,8	5	
DSA7800-05BUR-200-xxx	3/4	20	50	12A	0-9	22A	12A-UN	0-6	100	215	73	68	1,75	6,2	8,3	
DSA7800-05BUR-200-xxx	3/4	20	80	14Z	0-16	24Z	14Z-UN	0-16	100	255	73	94	2,6	6,2	8,3	
DSA7800-06BUR-250-xxx	1	25	80	14Z	0-16	24Z	14Z-UN	0-10	110	265	77	94	2,8	10,1	14,4	
DSA7800-06BUR-250-xxx	1	25	125	-	-	25Z	15Z-UN	0-16	110	-	77	140	-	10,1	14,4	
DSA7800-07BUR-320-xxx	1 1/4	32	80	14Z	0-8	24Z	14Z-UN	0-6	120	270	77	94	4,1	15,1	19,6	
DSA7800-07BUR-320-xxx	1 1/4	32	125	15Z	0-16	25Z	15Z-UN	0-12	120	315	77	140	5,6	15,1	19,6	
DSA7800-08BUR-400-xxx	1 1/2	40	80	14Z	0-5	24Z	14Z-UN	0-4	130	275	81	94	4,8	21,8	30	
DSA7800-08BUR-400-xxx	1 1/2	40	125	15Z	0-9	25Z	15Z-UN	0-9	130	325	81	140	6,3	21,8	30	
DSA7800-09BUR-500-xxx	2	50	125	15Z	0-5	25Z	15Z-UN	0-5	150	340	92	140	7,8	40	53	
Body stainless steel																
DSA7800-040TT-180-xxx	1/2	18	50	12A	0-12	22A	12A-UN	0-8	100	210	73	62	1,6	3,8	5	
DSA7800-040TT-180-xxx	1/2	18	80	14Z	0-40	24Z	14Z-UN	0-40	100	245	73	94	2,4	3,8	5	
DSA7800-050TT-180-xxx	3/4	220	50	12A	0-9	22A	12A-UN	0-6	100	215	73	68	1,75	6,2	8,3	
DSA7800-050TT-180-xxx	3/4	20	80	14Z	0-25	24Z	14Z-UN	0-25	100	255	73	94	2,6	6,2	8,3	
DSA7800-050TT-180-xxx	3/4	20	125	15Z	0-40	25Z	15Z-UN	0-40	100	-	73	140	-	6,2	8,3	
DSA7800-060TT-180-xxx	1	25	80	14Z	0-16	24Z	14Z-UN	0-10	110	265	77	94	2,8	10,1	14,4	
DSA7800-060TT-180-xxx	1	25	125	15Z	0-40	25Z	15Z-UN	0-25	110	-	77	140	-	10,1	14,4	
DSA7800-070TT-180-xxx	1 1/4	32	80	14Z	0-8	24Z	14Z-UN	0-6	120	270	77	94	4,1	15,1	19,6	
DSA7800-070TT-180-xxx	1 1/4	32	125	15Z	0-16	25Z	15Z-UN	0-12	120	315	77	140	5,6	15,1	19,6	
DSA7800-080TT-180-xxx	1 1/2	40	125	15Z	0-9	25Z	15Z-UN	0-9	130	325	81	140	6,3	21,8	30	
DSA7800-090TT-180-xxx	2	50	125	15Z	0-5	25Z	15Z-UN	0-5	150	340	92	140	7,8	40	53	

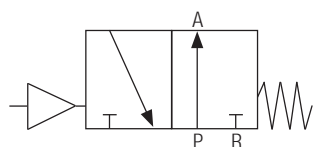
* declared is the maximal pressure range at a control pressure of 6bar

**KV-Value: The nominal flow of KV to VDI/VDE 2173 indicates the water amount in cubic metres per hour, at 100% opened armature, $\Delta p=1$ bar and at a water temperature from 5 to 30°C.

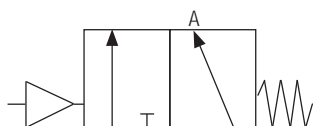
3/2-WAY PRESSURE OPERATED VALVE, DIRECT FORCE OPERATED

**Functions:****closed in rest position (NC):**

Type1xx: closing with the medium, single-acting. With liquids there can occur closing and opening strokes.

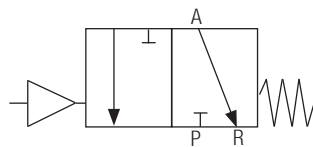
**opened in rest position (NO):**

Type2xx: closing with the medium, single-acting

**optional flow pattern: (Option -UN):**

Type1xx-UN: for optional flow pattern, function mix or spread

Function mix: P+R impinged with pressure

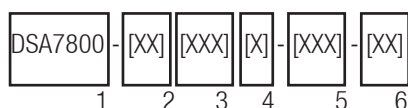


Function spread: A impinged with pressure

**Optional available:**

The GMV3197 as 3/2-way-pilot valve, direct force operated, for control of the compressed air cylinder. If necessary for big nominal sizes we advise the GMV3164 for faster closing times.

You find detailed information in the product group „Solenoid valve“.

**Appointment details:****1: Basistype: DSA7800****2: Connection size:**

- 04-09 (see chart)
- 24-29 (welding ends)

3: Material:

- 1. Body material
 - A = Brass
 - B = Red brass
 - O = Stainless steel
- 2. Spindle sealings and
 - 3. Seat sealings
 - T = PTFE
 - U = PTFE-Bronze
 - R = PTFE-Coal

4. Nominal size in 1/10mm (s. chart)

Demands on your application conditions that are not listed on the data sheet, can be requested!

The guide book and the maintenance guidelines, particularly the given safety instructions have to be paid attention to before the installation!

5: Type of the pressure cylinder (other types on request):

- 1. Information about the function
 - 1 = closing with medium, NC, single-acting
 - 2 = closing with medium, NO, single-acting
 - 3 = closing against medium, NC, single-acting
- 2. Information about the cylinder diameter:
 - 1: Ø30
 - 2: Ø50
 - 5: Ø125
- 3. Material of the cylinder
 - A = Brass (blank)
 - Z = Aluminium (blank)
 - O = Stainless steel

6: Options (see „Options“)