

BUTTERFLY VALVE, DOUBLE FLANGE DESIGN



Description:

- butterfly valve in double flange design
- 2-part spindle
- multiple spindle bearing
- top flange acc. to EN ISO 5211
- face-to-face length acc. to EN558, Reihe 13

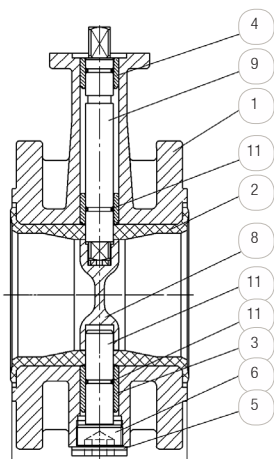
Range of application:

- max pressure difference PN10
- vacuum up to 0.2 bar (absolute)
- temperature range: -20°C up to +120°C and higher temperatures with other sealing.
- with top flange for direct pneumatic or electric automation
- no excess length of the disc in the piping

Comments:

The butterfly valves can be **directly automated**.

Optionally the valve can be delivered with a **spindle in dihedral design acc. ISO 5211** and with **continuous spindle**. **Flanges acc. to ANSI** are possible. The **disc** can be **electro-polished** or **mirror-polished**. Higher pressure ranges (max. working pressure 16 bar) are available on request. Also, a **non-ferrous metal** design is available. Furthermore, the body is also available with **short face-to-face length**.



For details about the order code see "Order information". An overview of the complete material code you can find at the beginning of each product section of the product catalogue.

Differing medium temperature for other sealing material:

- NBR: -20°C up to +80°C
- FKM: -20°C up to +150°C

pos.	part	standard material		optional material	
1	bodybody	EN-GJS-400-15 (GGG40)	M	1.0625	K
2	collar	EPDM	E	NBR	B
				CSM	
				FKM	V
				VSI	
3/4	bearing bush	MS58		polyamide	
				PTFE	
5	sealing ring DIN7603	Cu		-	
6	lock screw	steel nickel-plated		1.4408	
7	threaded pin	steel zinc-plated		1.4401	
8	disc	1.4408	O	1.0570	J
				1.4301	P
				1.4404	O
				1.4571	O
				1.4462	O
				2.4883	
9/10	spindle	1.4104		1.4401	
				2.4483	
				2.0975	
11	o-ring	NBR	B	FKM	V

Options:

- HG: hand gear
- FW: free spindle
- SF: free of silicone
- BU: free of non-ferrous metal

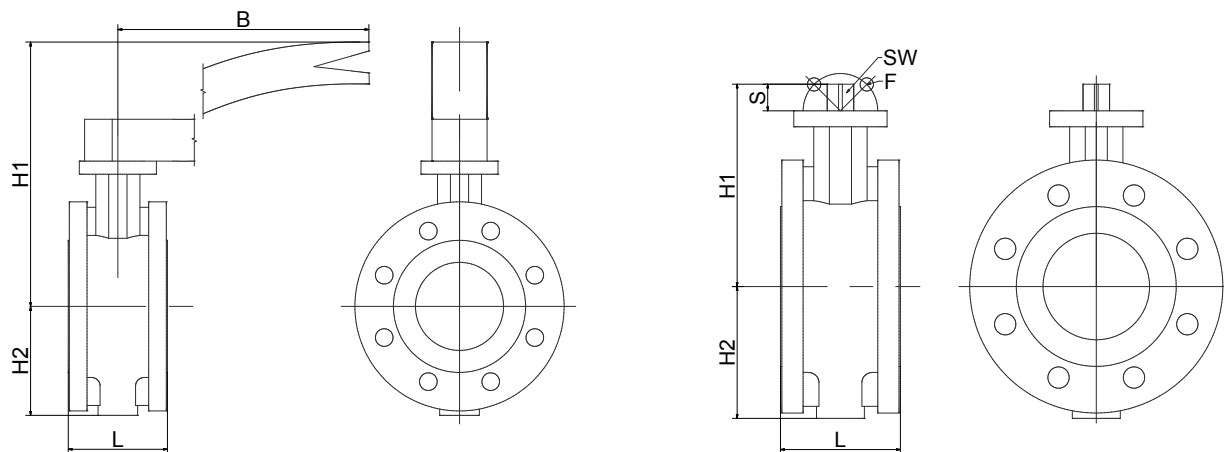
For electric actuated valves only:

- AP: accumulator security pack
- PT: potentiometer
- PO: positioning system

For pneumatic actuated valves only:

- SD: sound absorber
- AD: exhaust air regulator
- HT: actuator for high-temperatures
- PV: pilot valve For details see data sheet "GMV3197", "GMV3163" (3/2 way) and "MVA01" (5/2 way). Other types on request.
- PS: positioning indicator For details see data sheet "MCM2" (mechanical), "MCN2" (inductive, with ATEX 94/9/EC) and "MCS2" (inductive). Other types on request.

BUTTERFLY VALVE, DOUBLE FLANGE DESIGN

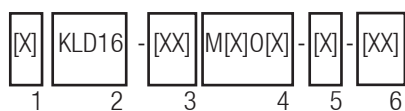


match code	size	max. pressure difference	L [mm]	L2 [mm]	L3 [mm]	H1 [mm]	H2 [mm]	B [mm]	F	SW*	S [mm]	CV** [m³/h]	breakaway torque***[Nm]	weight [kg]
KLD16-57-0Mx0x	DN50	PN10	108	102	15	196	84	155	F04	11	12	85	7	9.4
KLD16-58-0Mx0x	DN65	PN10	112	106	15	204	93	155	F04	11	12	215	15	10.2
KLD16-59-0Mx0x	DN80	PN10	114	108	17	237	104	195	F05	14	16	420	18	12.35
KLD16-60-0Mx0x	DN100	PN10	127	121	17	247	115	195	F05	14	16	800	28	16.25
KLD16-61-0Mx0x	DN125	PN10	140	134	19	260	127	195	F05	14	16	1010	45	24.15
KLD16-62-0Mx0x	DN150	PN10	140	134	19	303	150	276	F07	17	19	2100	110	29.5
KLD16-63-0Mx0x	DN200	PN10	152	146	21	328	176	276	F07	17	19	4000	140	39.6
KLD16-64-0Mx0x-HG	DN250	PN10	165	159	23	395	212	252	F010	22	24	6400	200	64
KLD16-65-0Mx0x-HG	DN300	PN10	178	170	24	449	237	280	F010	22	24	8500	280	87.7

* Spindle as square (standard).

**CV value: The nominal flow rate CVs acc. to VDI/VDE 2173 shows the water quantity in cubic meter per hour with the valve fully opened, $\Delta p=1$ and the water temperature between 5°C and 30°C.

***Breakaway torque: all data is determined with water at max Δp and normal ambient temperature. Multiplicator for frictional media is 1.3. If your configuration has special sealing material or your application has critical media consultation is obligatory.

**Order information:****1: automation:**

- no specification: latching hand lever/ hand gear
- D: pneumatic double acting
- S: pneumatic single acting
- E: electric actuated

2: type: KLD16**3: connection size:**

- 54 -69 (see table)
- attached is the nominal flange pressure:
0 = PN10

4: materials:

- 1. digit: body material
M = Cast iron with spheroidal graphite
- 2. digit: spindle sealing
B = NBR (standard)
F = FKM

3. digit: disc

O = stainless steel

4. digit: collar

E = EPDM (standard)

B = NBR

F = FKM

5: actuator:

- latching hand lever: no specification
- hand gear: option -HG / free spindle: option -FW
- automated: see column "actuator"

6: options (see "options")

Please ask for field specifications that are not listed in this data sheet.

Before installation please consider the installation and maintenance manual, especially the safety indications!

**DKLD16 / SKLD16**

High quality pneumatic actuator made of alloy with air connection according to NAMUR and positioning indicator. The actuator works with the rack/bevel method. For further details see the technical data sheet "DR/SC".

Types double acting (the actuator opens and closes with compressed air) and single acting (the actuator opens with compressed air and closes with spring pressure).

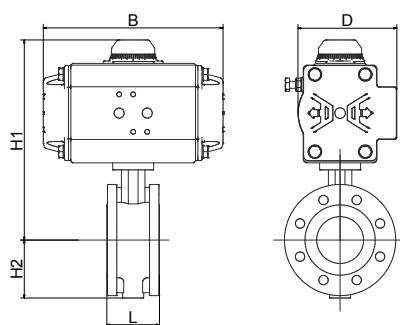
The actuators are configured for use with fluid, gas and antifricition medium. **For critical media it is strictly recommended to inform us!**

Description:

- working pressure: 0 - 16 bar
- pilot pressure: 6 - 8 bar

Range of application:

- ambient temperature: -20°C up to +80°C
- medium temperature: -20°C up to +80°C
(150°C with ambient temperature up to 35°C)
other temperature conditions upon request.

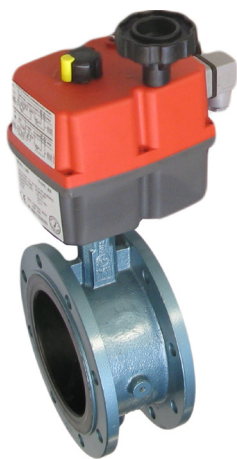


double acting: DKLD16					
match code	actuator	H1 [mm]	B [mm]	D [mm]	weight [kg]
DKLD16-57-0Mx0x-	DR010	207	118	62	10.05
DKLD16-58-0Mx0x-	DR015	223	136	72	11.1
DKLD16-59-0Mx0x-	DR030	262	153.5	84.5	13.8
DKLD16-60-0Mx0x-	DR030	272	153.5	84.5	17.7
DKLD16-61-0Mx0x-	DR60	302	203.5	93	26.7
DKLD16-62-0Mx0x-	DR150	350	259	118	34.2
DKLD16-63-0Mx0x-	DR220	403	304	136	47.1
DKLD16-64-0Mx0x-	DR220	441	304	136	69.2
DKLD16-65-0Mx0x-	DR300	478	333	146.5	91.2

single acting: SKLD16					
match code	actuator	H1 [mm]	B [mm]	D [mm]	weight [kg]
SKLD16-57-0Mx0x-	SC015-K	215	136	72	10.4
SKLD16-58-0Mx0x-	SC060-G	256	203.5	93	13.2
SKLD16-59-0Mx0x-	SC060-I	279	203.5	93	15.3
SKLD16-60-0Mx0x-	SC0100-I	302	241	106	20.4
SKLD16-61-0Mx0x-	SC150-J	327	259	118	30.1
SKLD16-62-0Mx0x-	SC300-K	390	333	146.5	41
SKLD16-63-0Mx0x-	SC450-I	515	394.5	166	57.4
SKLD16-64-0Mx0x-	SC600-J	492	422.5	181	83.2
SKLD16-65-0Mx0x-	SC900-I	641.5	474	200	116

Attention!

To avoid corrosion inside the spring chamber for single acting actuators caused by aggressive ambient air we recommend pilot valves with integrated air recirculation.

**EKLA10 / EKLC10**

High-quality electric actuator in compact design with a body made of high-strength plastics. It has a high-performance motor and a gear drive made of metal. A central control room heater and an electronic torque limiter are equipped as standard. For further details see the technical data sheet "J".

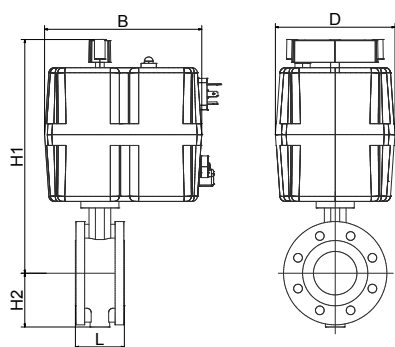
The actuators are configured for use with fluid, gas and antifriction medium. For critical media it is strictly recommended to inform us!

Description:

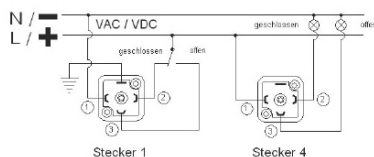
- working pressure: 0 - 16 bar

Description:

- ambient temperature: -20°C up to +70°C
- medium temperature: -20°C up to +80°C
(100°C with ambient temperature up to 35°C)
other temperature conditions upon request.



match code	actuator	H1[mm]	B [mm]	D [mm]	weight [kg]
EKLD16-57-0Mx0x-	J320	275	110	177	10.7
EKLD16-58-0Mx0x-	J320	283	110	177	11.5
EKLD16-59-0Mx0x-	J335	328	110	177	13.9
EKLD16-60-0Mx0x-	J335	338	110	177	17.8
EKLD16-61-0Mx0x-	J355	376	110	177	26.3
EKLD16-62-0Mx0x-	J2140	467	235	214	34.2
EKLD16-63-0Mx0x-	J2300	492	235	214	44.3
EKLD16-64-0Mx0x-	J2300	530	235	214	66.4
EKLD16-65-0Mx0x-	J2300	555	235	214	86.6

AC/DC Beschaltung
(3 Draht):**connection voltage type:**

- 19: 24V AC/DC up to 240V AC/ DC
- other voltages on request